

ROBO-MARKER G2

PRECISION

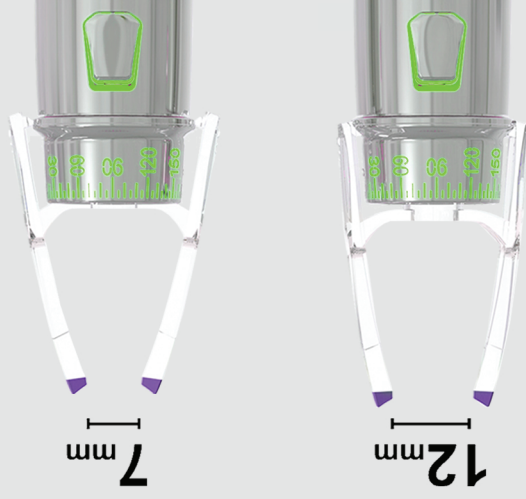
Laser Assisted Targeting

- Gyroscopic system for proper mark placement
- Adjustable brightness class 1 eye safe laser
- Includes patient fixation dot



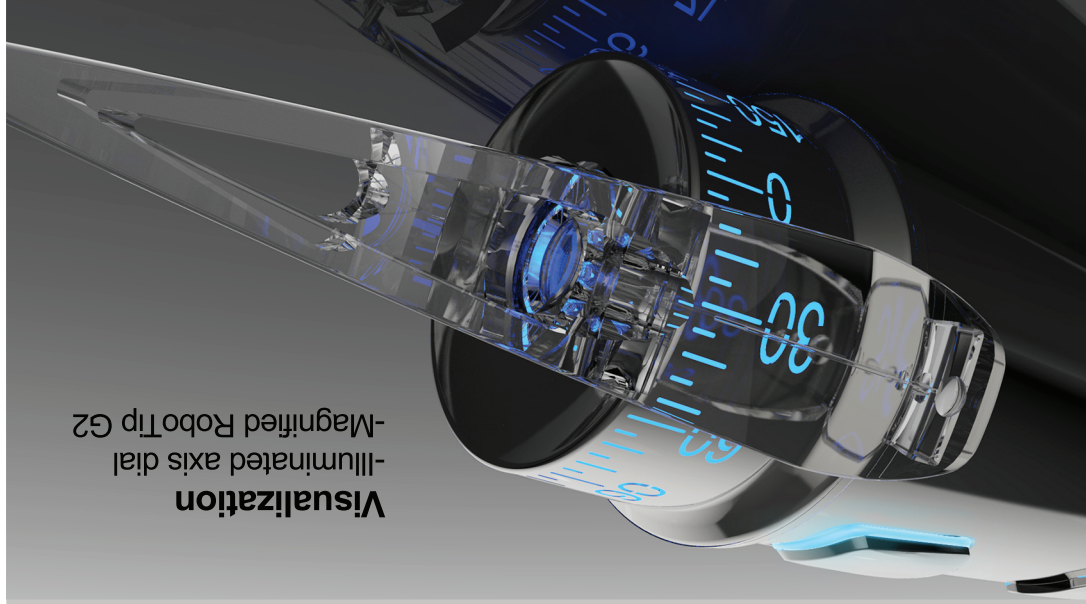
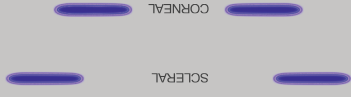
- Ease of Use and Confidence**
- Self Leveling design
- Brake button; prevents rotation
- 20% Larger for better ergonomics

**Better Alignment.
Better Outcomes.
SURGILUM®**



Versatility and Safety

- Dual position RoboTips (scleral or corneal)
- Preformulated RoboTips for multi spectrum visibility
- Sterile, single use RoboTips – no TASS



Visualization

- Illuminated axis dial
- Magnified RoboTip G2



Efficient

- No wait, no autoclave
- Long lasting marks (2+ hours), mark multiple patients in pre-op
- Single step marking to desired axis eliminates secondary OR marking
- Eliminate return to pre-op between cases

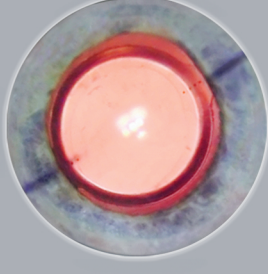
Cost Effective

- Eliminate multiple instruments: markers, axis rings, digital alignments
- No space requirements. No setup or maintenance fees.
- Low capital expense. Low cost per case.



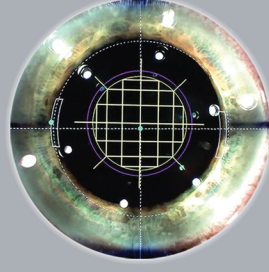
Used for Toric IOL Placement

The RoboMarker G2's dry formula lasts up to 2 hours and maintains clear, crisp lines. No autoclave wait and single step marking means a more efficient surgical day.



Used for Femtosecond Alignment

Premium results depend upon accurate marks. The RoboMarker G2's self-leveling high precision, ball bearing based pendular mechanism ensures that your Femtosecond Laser is aligned properly for optimal surgical marks.



SURGILUM®



18-00012-00

website



910 202 2202 surgilum.com
info@surgilum.com

how to



ROBOMARKER G2 World's first laser target astigmatic marker.
Made in the USA. Now available in 3 finishes



ROBOMARKER G2
MAKES A WORLD OF DIFFERENCE

