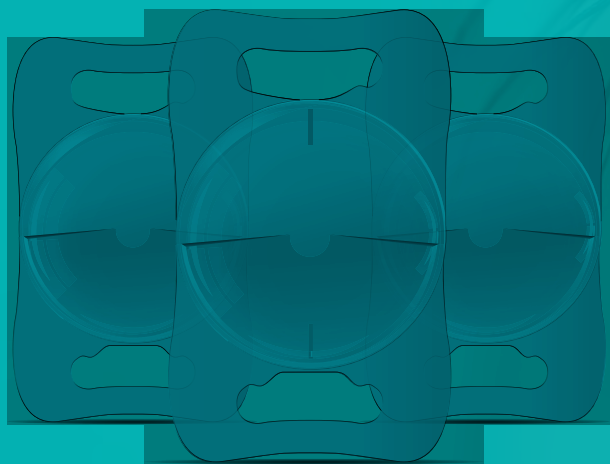




# LENTIS<sup>®</sup>

## Comfort

The EDOF-IOL Pioneer



COMFORT WITHOUT COMPROMISE



1

### Distance Zone

- For excellent distance vision <sup>1,2</sup>
- Optimal focusing of light rays

2

### Special Central Zone Design

- Enables the visual axis passing a clear zone

3

### Narrow Edge Profile

- Incorporating a seamless central optical zone

4

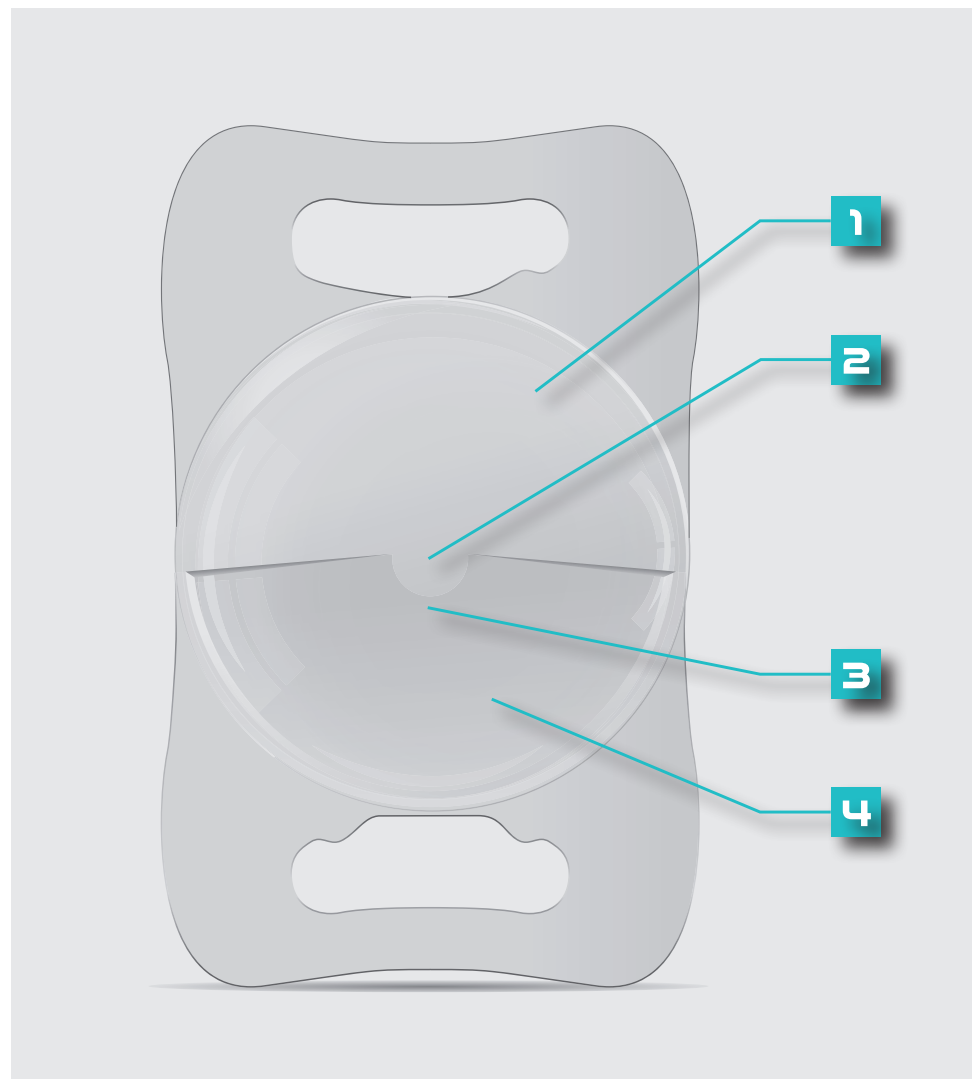
### Power Zone

- Providing increased intermediate vision

# Advanced Optical Design

Classic and innovative optical principles achieve multiple superior effects

- Extended depth of focus
- Refractive design
- High contrast sensitivity



# Extended Depth of Focus (EDOF) Intraocular Lens

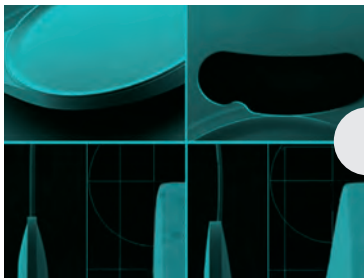
## LS-313 MF15

- Segmental refractive design, addition power: +1.5D
- Continuous clear distance and intermediate vision <sup>1,2</sup>
- High light transmission, almost no glare effect <sup>3</sup>
- High Contrast Sensitivity <sup>1</sup>
- Wide Focal Range



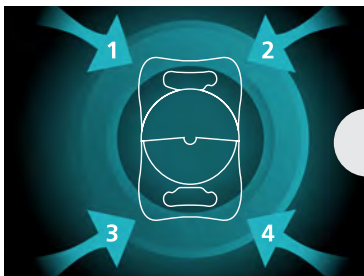
### HydroSmart® IOL

- Designed to reduce chromatic aberration <sup>4,5</sup>
- Hydrophobic surface properties



### Micro-Cutting Edge Technology

- One-step lens manufacturing
- High processing precision



### Unique Design

- Asymmetric EDOF design
- Plate-style haptics with four-point support
- Resists capsular bag contraction
- Excellent stability <sup>2,6</sup>



Sharp edge

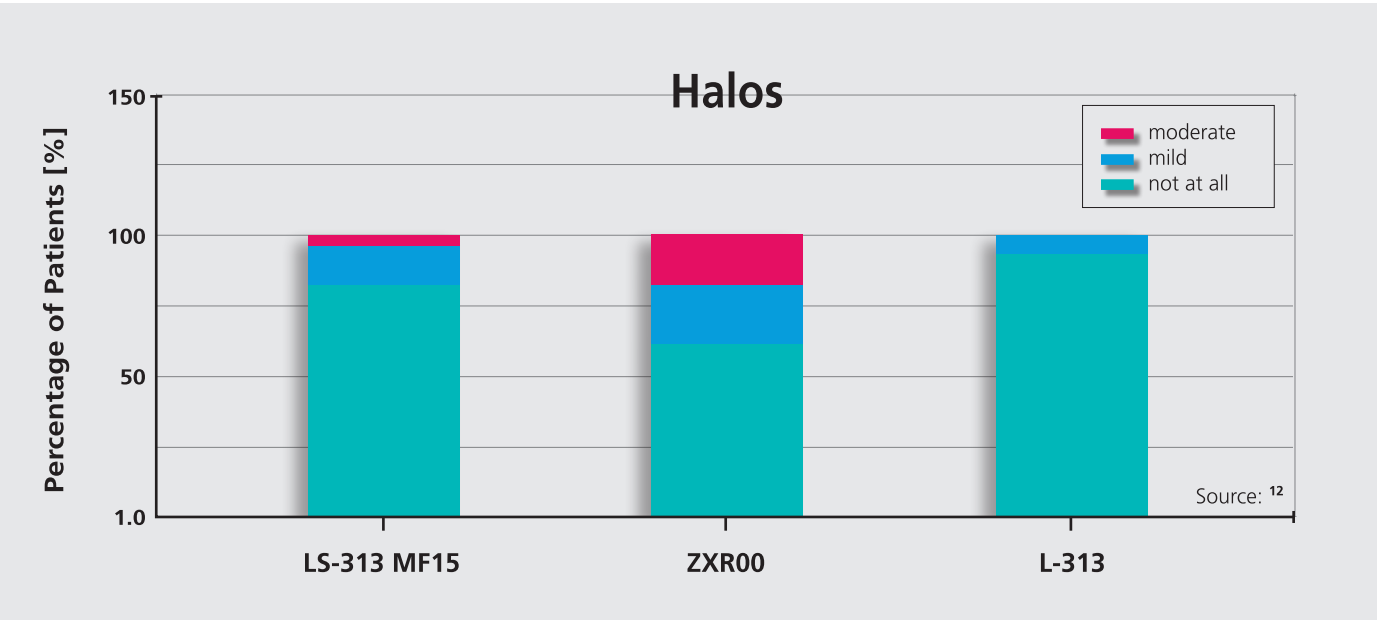
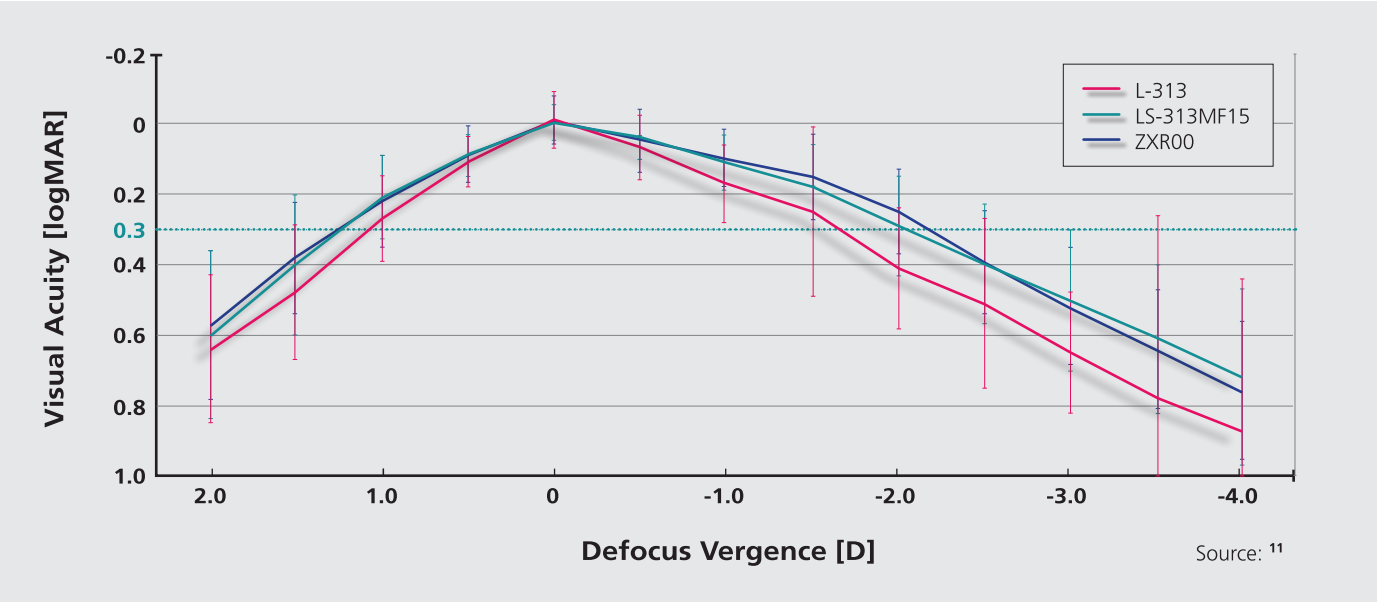
### Rear surface design with 360° continuous sharp edge <sup>7</sup>

- Designed to create a barrier between lens and posterior capsule
- Designed to reduce Posterior Capsule Opacification (PCO) <sup>8,9</sup>

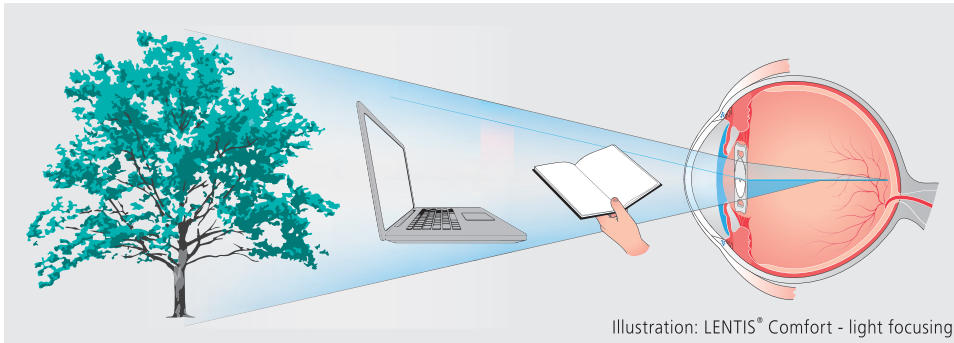
# Advanced Technology of EDOF Intraocular Lenses

LENTIS® Comfort can achieve clear, continuous distance-to-intermediate vision with extended depth of field <sup>10, 11</sup>

Implanting LENTIS® Comfort MF15 can provide an excellent continuous vision range from distant to intermediate distances, as well as functional near vision. <sup>12</sup>



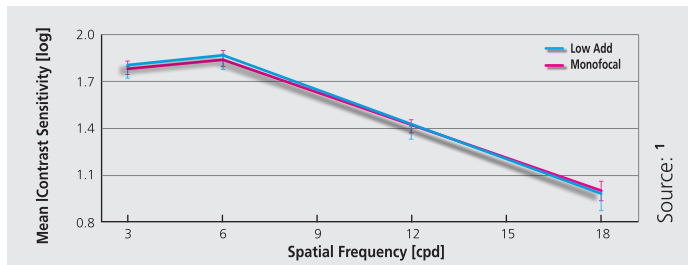
## LENTIS® Comfort with +1.5D addition, blending distance and intermediate focus, achieving EDOF effect <sup>10, 11</sup>



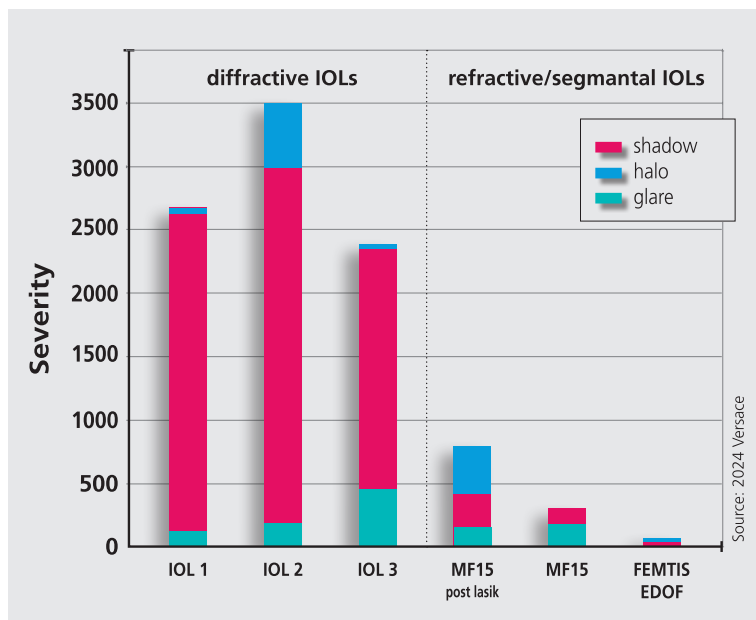
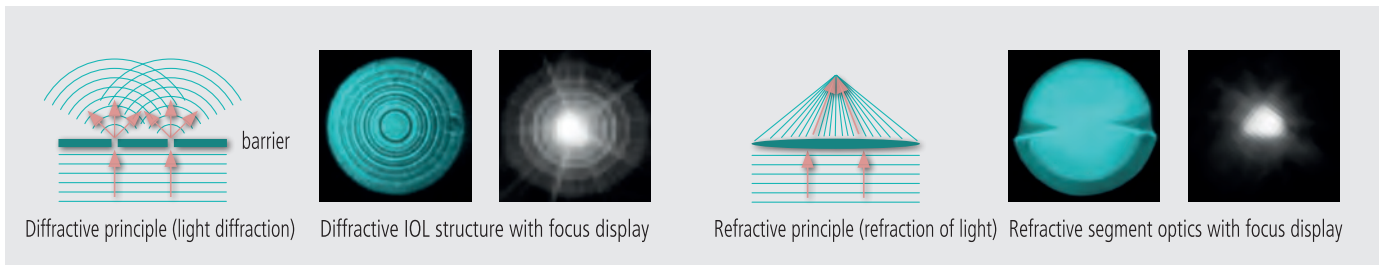
The lens brings distance and intermediate focal points closer together, creating a continuous focal range that provides clear distant and intermediate vision, achieving the EDOF effect.

## High contrast Sensitivity <sup>1</sup>

Contrast sensitivity of LENTIS® Comfort lens compared to monofocal lenses at different spatial frequency shows no significant difference, providing patients with high contrast sensitivity.



## Almost no glare, light scenes, and other abnormal light interference <sup>13</sup>



# Providing Excellent Distant and increased Intermediate Vision<sup>1,2</sup>

## Offering a solution for cataract patients' daily life visual needs

LENTIS® Comfort extended depth of focus intraocular lens uses a patented refractive EDOF design, providing excellent distant and increased intermediate vision. This meets the vision requirements of most cataract patients and is particularly important for patients seeking comfortable, natural vision - such as for cooking, shopping, computer use, driving, and sports activities.

### LENTIS® Comfort can provide:

- Extended depth of focus
- Good life-quality vision
- Visual quality comparable to monofocal IOL, with a wider vision range than traditional monofocal lenses
- Excellent distant and intermediate vision<sup>1,2</sup>
- High contrast sensitivity<sup>1</sup>

#### Standard monofocal IOL

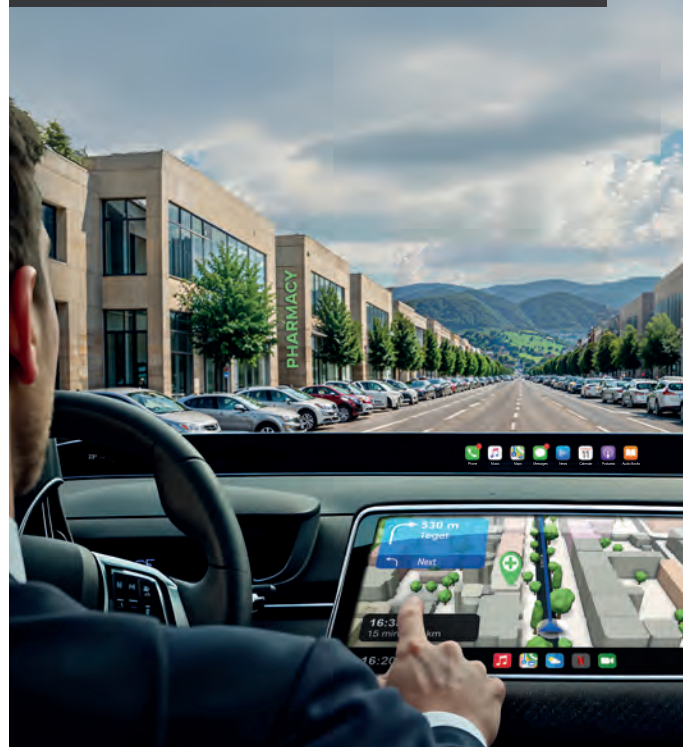
Good distance vision  
Reading glasses and varifocals necessary



Illustrative image to simulate expected and potential outcome

#### Segmental EDOF IOL: LENTIS® Comfort

Sharp distance and good intermediate vision  
In some cases reading glasses might be necessary

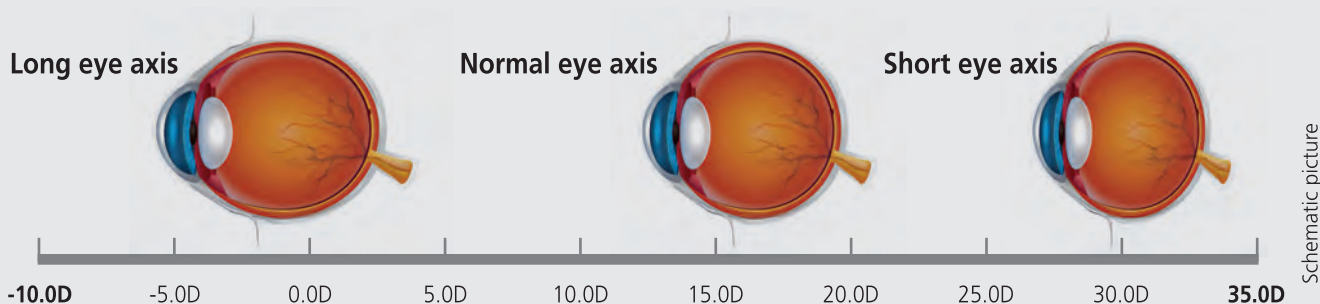


Illustrative image to simulate expected and potential outcome

# Suitable for Patients with Different Eye Conditions

## Super Wide Optical Power Range

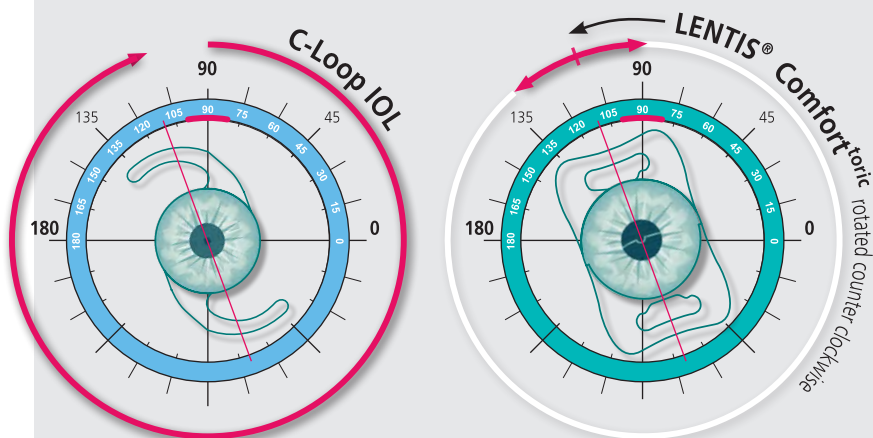
Range from -10D to +35D, wide optical power range, accommodating patients with different eye axis lengths



LENTIS® Comfort and LENTIS® Comfort<sup>toric</sup> are premium intraocular lenses (IOLs) that treat both cataracts and presbyopia. The LENTIS® Comfort<sup>toric</sup> additionally corrects astigmatism.

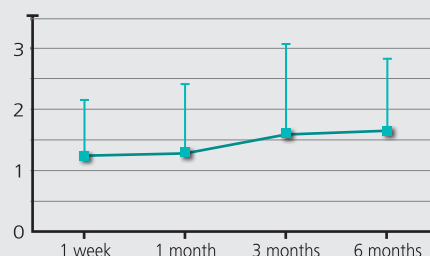
### Easy IOL alignment

Adjustment possible in both directions compared to a toric IOL with C-loop haptic design



Alignment axis IOL torus 110° | Incision 90°

### Good rotation stability



- 6 months postoperability was  $1.66^\circ \pm 1.17^\circ$
- 98.1% - less than  $5^\circ$
- 100% within  $10^\circ$  rotation

Source: Presentation at ESCRS 2024, Dr. N. Azmi

Parameters	LENTIS® Comfort MF15	LENTIS® Comfort MF15T0-T6
Type	Foldable one-piece acrylic IOL	Foldable one-piece acrylic IOL
Optic Size   Overall Length	6.0 mm   11.0 mm	6.0 mm   11.0 mm
Haptic Angulation	0°	0°
Optic Design	- Dioptres: Convex-concave   + Dioptres: Biconvex Aspherical surface - posterior, sector-shaped near vision segment - anterior: +1.5 D	Biconvex Aspherical and toric surface -posterior, sector-shaped near vision segment - anterior: +1.5 D
IOL Design	Plate haptic   Optic and haptics with square edges, posterior 360° continuous barrier effect	Plate haptic Optic and haptics with square edges
Material	HydroSmart® - a copolymer, consisting of acrylates with hydrophobic properties, UV absorbing	HydroSmart® - a copolymer, consisting of acrylates with hydrophobic properties, UV absorbing
Available Diopters	-10.0 D to -1.0 D (1.0 D) ±0.0 D to +36.0 D (0.5 D)	SE: +10.0 D to +30.0 D (0.5 D) Cyl.: T0 +0.75 D   T1 +1.5 D   T2 +2.25 D   T3 +3.0 D   T4 +3.75 D   T5 +4.5 D   T6 +5.25 D
Refractive Index	1.46	1.46
A constant (nominal)	118.0	118.0

Source: IOLcon.org

Please note that neither Teleon nor IOLcon can be held responsible for correctly specifying the optimized A constants for the Zeiss IOLMaster. The specified constants are therefore to be seen as a guide value and starting point for calculating the IOL refractive power

## References:

- Emilio Pedrotti, Rodolfo Mastropasqua, Jacopo Bonetto, Christian Demasi, Francesco Aiello, Carlo Nucci, Cesare Mariotti, Giorgio Marchini. Quality of vision, patient satisfaction and long-term visual function after bilateral implantation of a low addition multifocal intraocular lens. Int Ophthalmol, 2018; 38(4):1709-1716.
- Tetsuro Oshika, Hiroyuki Arai, Yoshifumi Fujita, Mikio Inamura, Yasushi Inoue, Toru Noda & Kazunori Miyata. One-year clinical evaluation of rotationally asymmetric multifocal intraocular lens with +1.5 diopters near addition. Scientific Reports; 2019, 9:13117.
- Auffarth G U (2011) Optical side-effects of presbyopia-correcting IOLs and corneal procedures; Dept. of Ophthalmology, Ruprecht-Karls-University Heidelberg
- Salvá, L.; García, S.; García-Delpech, S.; Martínez-Espert, A.; Montagud-Martínez, D.; Ferrando, V. Comparison of the Polychromatic Image Quality of Two Refractive-Segmented and Two Diffractive Multifocal Intraocular Lenses. J. Clin. Med. 2023, 12, 4678.
- Zhao H, Mainster M A. The effect of chromatic dispersion on pseudophakic optical performance[J]. British journal of ophthalmology, 2007, 91(9): 1225-1229
- Borkenstein A F, Borkenstein E M. Clinical Performance of New Enhanced Monofocal Intraocular Lenses: comparison of Hydrophobic C-loop and Hydrophilic Plate-Haptic Platform[J]. Advances in Therapy, 2023, 40(10): 4561-4573.
- Werner L, MD, PhD. Intraocular Lenses - Overview of Designs, Materials, and Pathophysiologic Features. Ophthalmology, 2021, Volume 128, Issue 11, E74-E93.
- H. Höh, C. Stylianides, U. Holland. Nachstarquote der MICS-Linse L-313. 32. Kongress der Deutschsprachigen Gesellschaft für Intraokularlinsen-Implantation, Interventionelle und Refraktive Chirurgie, 2018, 271-290.
- Christoforos S, Helmut H, Holland U. Posterior capsule opacification (PCC) rate of a hydrophilic acrylic intraocular lens suitable for microincisional cataract surgery (MICS)[J]. Medicine and Clinical Science, 2020, 2(3): 1-9
- Jorge L. Alio, MD, PhD, Ana B. Plaza-Puche, MSc, Raul Montalban, MSc, Jaime Javaloy, MD, PhD. Visual outcomes with a single-optic accommodating intraocular lens and a low-addition-power rotational asymmetric multifocal intraocular lens. J Cataract Refract Surg 2012; 38:978-985
- Vounotrypidis E, Diener R, Wertheimer C, et al. Bifocal nondiffractive intraocular lens for enhanced depth of focus in correcting presbyopia: Clinical evaluation[J]. Journal of Cataract & Refractive Surgery, 2017, 43(5): 627-632.
- Song, Xiaohui MD; Liu, Xin MD; Wang, Wei MD; Zhu, Yanan MD; Qin, Zhenwei MD; Lyu, Danni MD; Shentu, Xingchao MD; Xu, Wen MD; Chen, Peiqing MD; Ke, Yao MD. Visual outcome and optical quality after implantation of zonal refractive multifocal and extended-range-of-vision IOLs: a prospective comparison. Journal of Cataract and Refractive Surgery, 2020, 46(4):540-548.
- Presentation at ESCRS 2018 & 2024, Dr. P. Versace
- Presentation at ESCRS 2024, Dr. N. Azmi

## MANUFACTURER:

Revision: QF2697v1



Teleon Surgical B.V. | Van Rensselaerweg 4 b | NL - 6956AV Spankeren

✉ [marketing@teleon-surgical.com](mailto:marketing@teleon-surgical.com)

## SALES SWITZERLAND AND AUSTRIA:



Mediconsult AG | Froheimstrasse 2 | CH-9325 Roggwil TG | Tel. +41 71454 7020

Mediconsult Österreich GmbH | Auerspergstrasse 8 | AT-4020 Linz | Tel. 0800 0700 50

🌐 [www.mediconsult.ch](http://www.mediconsult.ch)

🌐 [www.mediconsult.at](http://www.mediconsult.at)