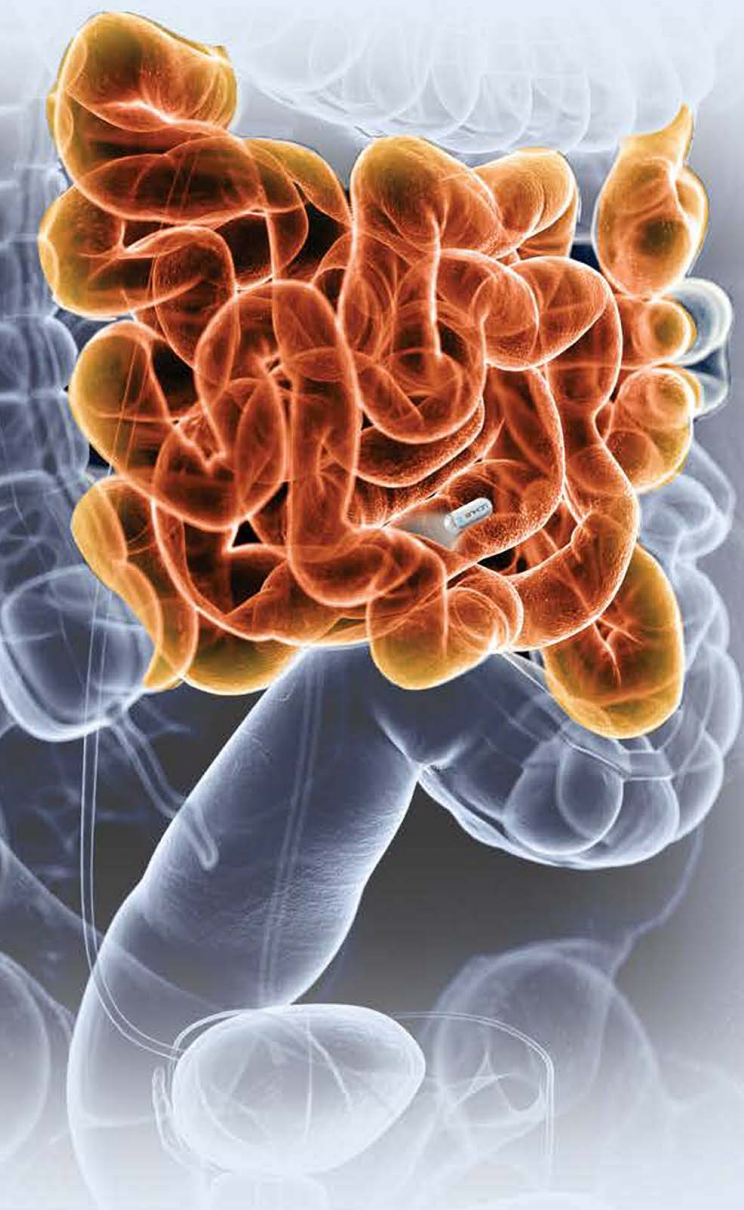


Converging Robotics & AI...a new vision of GI diagnostic & therapeutic excellence

NAVICAM[®] SB System

SMALL BOWEL CAPSULE ENDOSCOPY

...with **ProScan[™]**
Intelligent
Reading
Support



NaviCam® Small Bowel Capsule Endoscopy System with ProScan™

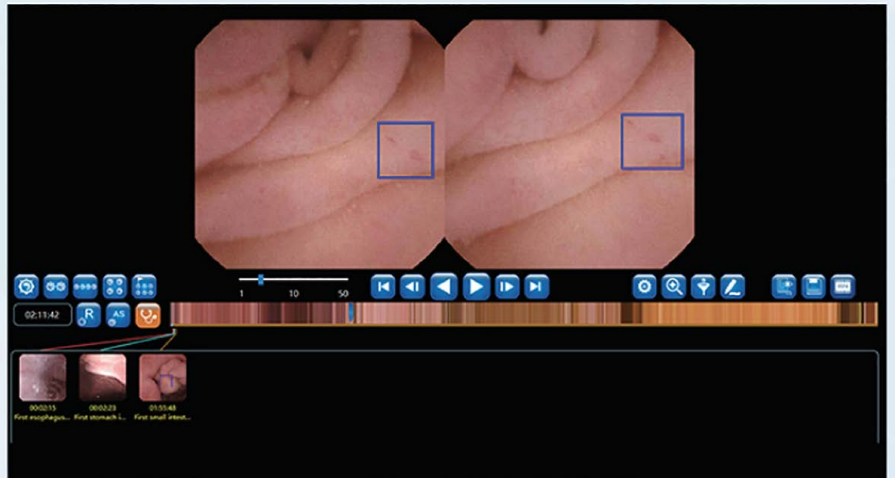
All small bowel capsule systems are not created equal. Using novel aspherical lens technology, the NaviCam® SB System has an image resolution of 640*480, frame rate of 0.5 – 12 FPS and an extended battery life of up to 12 hours. But what makes the NaviCam® SB System unique is the ProScan™ Intelligent Reading Support and is the driving reason why AnX Robotica is not just another capsule company.

The DICOM enabled NaviCam® SB with ProScan™... your solution for improved efficiency for small bowel studies.

NaviCam® Components

Small Bowel Capsule

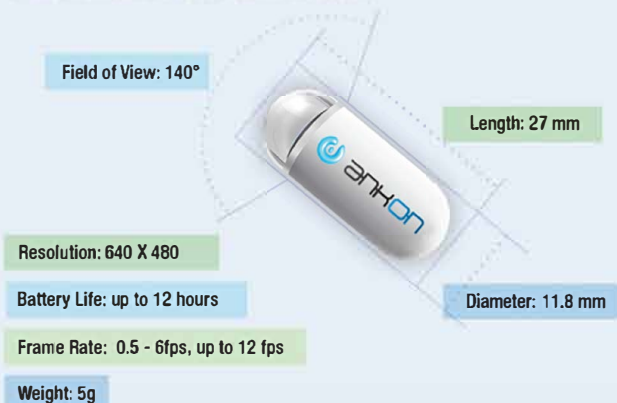
The ingestible capsule is a pill-sized video camera that the patient swallows with water before starting the examination. Inside the capsule, is a tiny camera that has its own light source. It continually captures images of the patient's small bowel.



Data Recorder

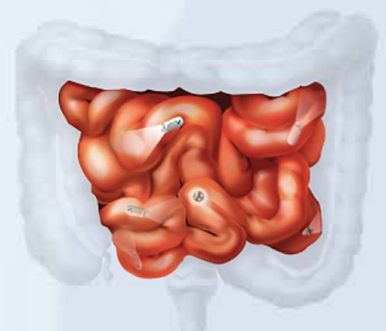
The Data Recorder is worn over the patient's clothes for the examination. It is used to receive the picture images within the stomach that are captured by the capsule during the examination.

NaviCam® SB Capsule Technical Information



NaviCam® Benefits

- ProScan™ Intelligent Reading Support
- Single Use
- Easy Operation
- High-Resolution Imaging



NaviCam® Clinical Evidence

ProScan™ incorporates Deep Neural Networks (DNN), such as a Convolutional Neural Network (CNN), a deep learning algorithm that can differentiate one image from another. This deep learning model enables ProScan™ to assist with the identification of multiple subtypes of abnormal lesions found in the small bowel as well as improving efficiency.

In a landmark study published in Gastroenterology, titled:

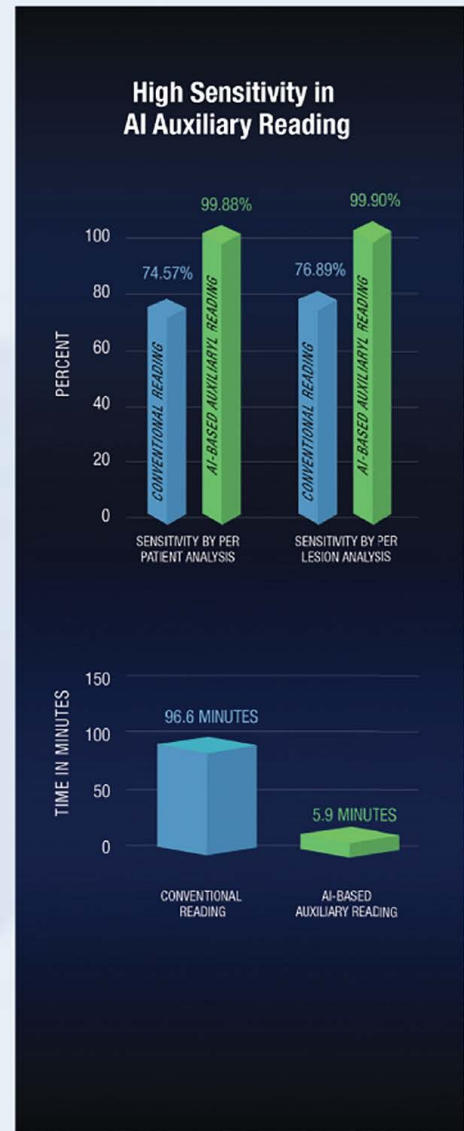
Gastroenterology-Level Identification of Small-Bowel Diseases and Normal Variants by Capsule Endoscopy Using a Deep Learning Model

ProScan™ was trained to differentiate abnormal from normal images using over 150 thousand images collected from 1,970 patients. This deep learning model based on CNN identified abnormalities with a sensitivity of 99.88% in per-patient analysis and 99.90% in per lesion analysis, when compared to conventional analysis.

Aims: ... To achieve the highest sensitivity to screen out abnormal lesions.

Data Source: ... 113,426,569 images from 6,790 patients who had SB-CE at 77 medical centers

Another significant finding in this study showed a dramatically reduced reading time of 5.9 ±2.23 minutes compared to 96.6 ±22.53 minutes. The authors noted that this CNN -based model may be an important advance for SB-CS reading and could significantly reduce the cost of SB-CE reading.



ProScan™ Intelligent Reading Support



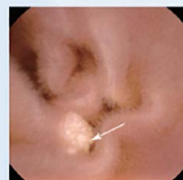
Protruding Lesions



Punctate Erosion



Diverticulum



Leukoplakia



Nodular Lymphoid Hyperplasia



Bleeding



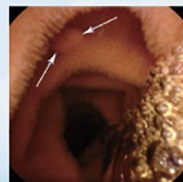
Crohn's Disease



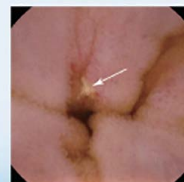
Parasites



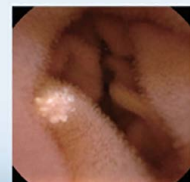
Angioectasia



Polyps



Ulcer



Xanthoma

AnX Robotica Corporation

Founded in 2019, is an advanced technology medical device company integrating innovative research and development with the mission of providing the medical community with patient-friendly devices for diagnostic and therapeutic applications.

Headquartered in Plano, Texas, AnX Robotica, along with its sister company, ANKON Technologies, has developed a new way of minimally invasive thorough visualization of the stomach with comparable performance to gastroscopy - the gold standard.

Incorporating Magnetically Controlled Capsule Endoscopy (MCCE), the NaviCam® Stomach System has achieved a medical milestone by enabling the ability to perform a stomach examination with a patient-friendly procedure while giving the physician complete control. By simply swallowing a pill-sized capsule, patients can undergo a thorough examination without the need for sedation.

With the innovation of the MCCE NaviCam® Stomach System and NaviCam® SB System for Small Bowel Endoscopy, AnX Robotica, the distributor of ANKON products, is working to expand the NaviCam® platform for various additional diagnostic aids and therapeutic applications, including the NaviCam® UGI for esophageal studies as well as NaviCam® Colon.



Distributed by:
AnX Robotica
6010 W. Spring Creek Pkwy
Plano, TX 75024
855.777.0020 or 469.606.9495
info@anxrobotics.com

Distribution Switzerland:



LASERMED AG
Roggwil TG
Corminboeuf FR
info@lasermed.ch
www.lasermed.ch

NaviCam Disclaimer

AnX Robotica's NaviCam software includes optional functionalities and features designed to assist healthcare providers in operating the NaviCam system.

Providers shall have the sole and exclusive responsibility for operating the NaviCam software and system and for choosing to use NaviCam's optional functionalities and features. Providers shall operate the NaviCam software and system in compliance with all applicable federal and state legal requirements and the requirements of all applicable professional licensing boards relating to providers' professional medical services. Providers using the NaviCam software and system are solely responsible for interpreting data resulting from the use of the NaviCam software and system and for providing medical services and advice to their patients.

AnX Robotica does not provide medical advice or perform medical services. Providers shall operate the NaviCam software and system, including any optional functionalities and features, in their sole discretion, using their professional judgment. The NaviCam software and system is not intended in any way to replace Providers' independent medical review and analysis.

