



SmartXide TOUCH **For Vulvo Vaginal Health**

MonaLisa *Touch*®

Game Changing
Therapy for Women Intimacy

Smartxide Touch stands out in **Gynaecology**



DEKA
Innate Ability

SMARTXIDE TOUCH's Quick Wins:

Genitourinary Syndrome of Menopause | Postpartum Hypoestrogenism Symptoms
Genital Functional & Aesthetic Surgery
Vaginal Laxity | Mild Stress Urinary Incontinence | Labia Majora Hypertrophy

Key Principles

SmartXide Touch is the truly decisive laser for **MonaLisa Touch**: the best known procedure to treat vulvovaginal conditions in menopausal, breast cancer survivors and hysterectomized women. With the introduction of **RF Touch** it's possible to treat vulvo-vaginal laxity and SUI symptoms expanding the treatable vulvo vaginal conditions.

Why Choosing SmartXide Touch:

Designed Properly for MonaLisa Touch

A special pulse shape – D Pulse - has been specifically developed for treating vaginal mucosa effectively and safely.

+50 Peer Reviewed Studies

More than 50 international publications have confirmed the great efficacy and safety of the MonaLisa Touch procedure.

RF TOUCH for SUI and Vulvo-Vaginal Laxity

The new single use RF handpiece satisfies completely the vaginal health treatment requests (vulvo-vaginal laxity and SUI).



MonaLisa Touch[®]

The Unrivalled Treatment for Genitourinary Syndrome of Menopause

MonaLisa Touch acts on atrophic vaginal tissue restoring the functionality of vaginal mucosa. It calms down – or even eliminates – the most common symptoms that affect women's quality of life and intimate relationship, such as:

- **Vaginal Dryness**
- **Itching and Burning**
- **Painful Sex (dyspareunia)**

SmartXIDE Touch

THE SCIENCE BEHIND

HI-SCAN V²LR

Speed and Repeatability of the Treatment

Exclusive **Hi-Scan V²LR Probe** - the full-angle applicator emitting laser energy in a **360°** manner ensures quick, perfect and even treatments, that are easily duplicated over different sessions and with different patients.



Perfect Laser Tissue Interaction

D-Pulse is an exclusive pulse shape, designed by DEKA specifically for the MonaLisa Touch treatment, thus ensuring maximum effectiveness (by using the right penetration depth) without any side effects (control of thermal effect).



Quick and Painless Treatment

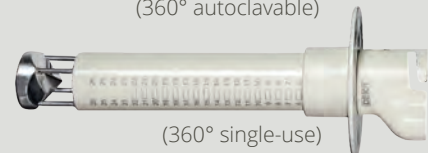
The laser energy to the vaginal walls is provided in a fractional mode (DOT-Therapy): only a small percentage of vaginal tissue is directly affected by the laser.

Maximum Patient Adaptability

Availability of different types of probes to address the specific clinical and/or anatomic needs of individual patients.



(360° autoclavable)



(360° single-use)



(23 mm diameter)



(16 mm diameter)



(vulvar applicator)

A close-up photograph of a woman with brown hair and blue eyes, smiling and holding a large orange and yellow rose to her nose. The image is partially obscured by a white diagonal shape that contains text.

THE SCIENCE BEHIND

Proper for Tightening and SUI

RF Touch: to Get a Deeper and Uniform Stimulation

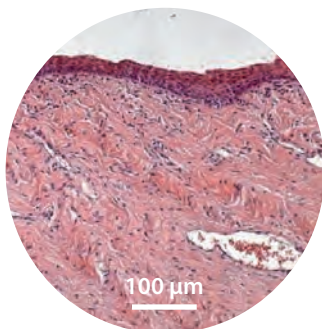
RF Touch adds a complementary treatment to the CO₂ laser: a deeper stimulation of the connective vaginal mucosa, improving all the problems related to non atrophic flabbing tissues such as **SUI** (Stress Urinary Incontinence) and **Vulvo - Vaginal Laxity**



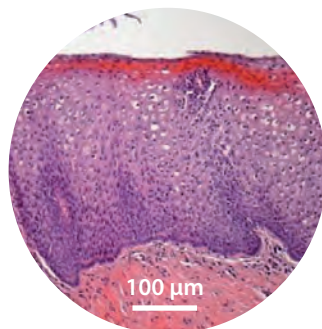
*Single Use RF
Touch probe*



Clinical Results

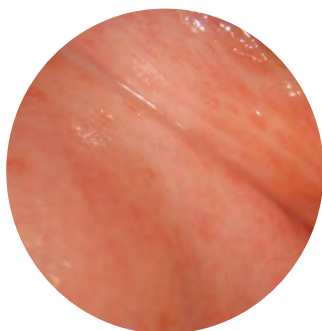


PRE

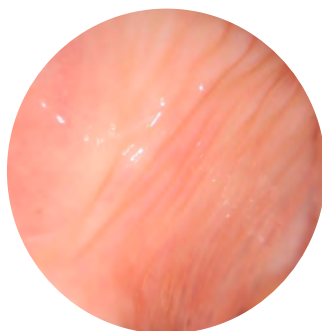


POST

MonaLisa Touch treatment.
The morphology demonstrates the restored metabolic trophism and dynamics of the whole epithelium.
Courtesy of **Prof. A. Calligaro**,
University of Pavia, Italy.

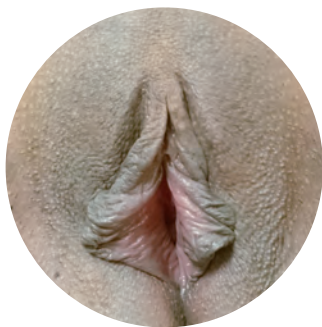


PRE

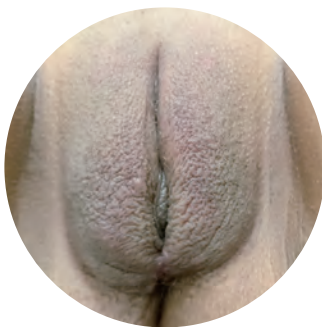


POST

MonaLisa Touch treatment.
Colposcopic images of vaginal mucosa.
Courtesy of **MG. Fallani, M.D.**; **A. Pieralli, M.D.**;
Prof. S. Guaschino, M.D.; **Prof. C. Penna, M.D.**;
Careggi University Hospital, Florence, Italy.



PRE



POST

Vulvo-Vaginal Aesthetic and Functional Surgery.
CO₂ laser labiaplasty combined with fat grafting.
Courtesy of **P. González Isaza, M.D.**
Pereira, Colombia.

Knowing Our Audiences and Market

The demand for vaginal health treatments is increasing and driven by rising cases of, birthing injuries and urinary incontinence. Increasing popularity of radiofrequency (RF)-based treatments is expected to drive the market expansion further as well.



OVER
4.4 billion \$
VAGINAL TREATMENTS MARKET



+12.5% CARG
OVER THE
FORECAST YEAR*



+29% demand
FOR AESTHETIC
VAGINAL PROCEDURES**

* www.grandviewresearch.com (2018)

***Indian Journal of Women's Dermatology* (2012-2015)

The Floor to Practitioners

“ We started testing MonaLisa Touch® and treating patients in 2012. At the beginning, I was very skeptical about the use of lasers for vaginal stimulation because, at that time, no evidence or credibility were available in Gynecology. With time both clinical and histological results exceeded my expectations! Histological studies, conducted in collaboration with Prof. Alberto Calligaro from the University of Pavia, showed that MonaLisa Touch® treatment restored the mucosa to a pre-menopausal condition, as would occur after an oestrogen hormone replacement treatment.”

Stefano Salvatore, M.D.

Associate Professor in Obstetrics and Gynecology, Vita e Salute San Raffaele University
Head of the Urogynaecology Unit at the IRCCS San Raffaele Hospital, Milan (Italy)

“ A game changer is literally something that alters the way we do things, and we don't have a lot of game changers that come along every day in medicine. I like to use the word game changer with MonaLisa Touch® because it is fulfilling a huge void for women. I was very willing to try this because it's a huge need. It's a huge therapeutic area. Results are almost immediate. As part of the protocol, we had patients that, after their first treatment, hand down they were improved moisture, less pain, less pressure.”

Mickey Karram, M.D.

Director of Fellowship Program on Female Pelvic Medicine & Reconstructive Surgery
The Christ Hospital, Cincinnati, OH (USA)

“ I consider MonaLisa Touch® treatment a milestone option for several urogynecological applications, such as Genitourinary Syndrome of Menopause (GSM), cancer related vaginal atrophy and dyspareunia conditions that do not respond quite well to traditional treatments. All of our patients reported an important improvement either on all the symptoms and quality of life.”

Pablo Gonzalez Isaza, M.D.

Specialist in Obstetrics and Gynecology, San Jorge University Hospital, Pereira (Colombia)
President of Colombian Aesthetics Gynecologists Association

“ RF Touch adds a complementary treatment to the CO2 laser: a customized solution aimed at women's health and well-being and for all those problems that appear with age, hormonal changes and physical damage. Patients often see results immediately, with continuous improvements over the following weeks”

Paolo Mezzana, M.D.

Plastic Surgeon, Rome - Italy

THE PERFECT MATCH

SMARTXIDE TOUCH **Strength**

Operator and patient total comfort benefits:

- **Unrivalled treatment**
- **Specially designed to treat effectively vulvo vaginal mucosa**
- **The only in depth [validated laser therapy](#) for women intimacy**
- **[Hundreds of thousands of women](#) successfully treated worldwide**
- **[Maximum safety](#) and effectiveness**
- **Your best tool to treat genitourinary symptoms**
- **[Enlarged number](#) of patient thanks to [RF Touch](#) (both VVA and not VVA)**
- **[Double source](#) (Laser + RF) in a stand alone system**
- **[360° care](#) of vulvo vaginal health**

 **Only for DEKA Users:**
a great support in medical practice
DEKA *Club*

7 mirrors
articulated arm

Integrated protocols specifically designed for vulvo vaginal applications

Bipolar RF source

High precision double galvanometer scanner

360° V²LR probe

RF CO₂
Laser source



Technical Specifications

SMARTXIDE TOUCH - V ² RL configuration			
Laser Type & Wavelength		CO ₂ RF - 10,600 nm	
Pulse Shape Design		CW-SP-DP-HP-UP	
Power		0-60 W	
Accessories		Hi-Scan V ² LR Scanner System. Wide range of surgical handpieces	
Dimensions and Weight		118 (H) cm x 42 (W) cm x 54 (D) cm 62 Kg	
Electrical Requirements		100-230 Vac – 50/60 Hz – 1200 VA	
HI-SCAN V ² LR SCANNER SYSTEM		RF TOUCH SINGLE-USE HANDPIECE	
Scanner Area	Max 8x8 mm with 90° and Vulvar Probes	Source	Bipolar Radiofrequency
Scanning Methods	Normal - Interlaced - SmartTrack	Working Frequency	500 kHz
SmartStack Level	From 1 to 5	Treatment Activation	Controlled by footswitch
Probes	360° full-angle both autoclavable and single –use (optional) 90° single-angle (optional) Vulvar	Effectiveness Treatment Control	Integrated temperature sensor and timer

CAUTION - Visible and invisible laser radiation. Avoid eye or skin exposure to direct or scattered radiation. Class 4 laser product.

This brochure is not intended for the market of USA.



SmartXIDE Touch

DEKA
Innate Ability

Follow us on



www.dekalaser.com

Dealer stamp

Distribution Switzerland:



LASERMED AG
Roggwil TG
Corminboeuf FR
info@lasermed.ch
www.lasermed.ch



DEKA M.E.L.A. s.r.l.

Via Baldanzese, 17 - 50041 Calenzano (FI) - Italy
Tel. +39 055 8874942 - Fax +39 055 8832884

DEKA Innate Ability

A spin-off of the E.I.En. Group, DEKA is a world-class leader in the design and manufacture of lasers and light sources for applications in the medical field. DEKA markets its devices in more than 80 countries throughout an extensive network of international distributors as well as direct offices in Italy, France, Japan and USA. Excellence is the hallmark of DEKA's experience and recognition garnered in the sphere of R&D in over thirty years of activity. Quality, innovation and technological excellence place DEKA and its products in a unique and distinguished position in the global arena. DEKA manufactures laser devices in compliance with the specifications of Directive 93/42/EEC and its quality assurance system is in accordance with the ISO 9001 and ISO 13485 standards.