



endo is the sole highly specialized electrocautery unit in the medical market designed for endoscopic procedures.

endo is designed to meet all requirements of endoscopic room. It enables performing all endoscopic procedures with specialized cutting modes and argon plasma coagulation.

## ADVANTAGES

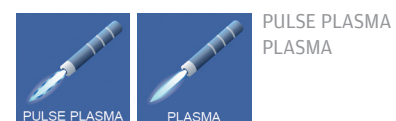
- maximal simplify of the handling
- colour TFT display with touch screen
- advanced endoscopic modes
- two different endoscopic argon plasma coagulation modes
- automatic regulation of all working parameters
- recognition of connected instruments - SmartDevice System
- additional monopolar cut and coag modes for open surgery
- specially designed footswitch with separate cut/coag/plasma activation buttons
- wireless footswitch compatible
- dedicated trolley with case for argon cylinder and handy basket for accessories and cables

## Applications:



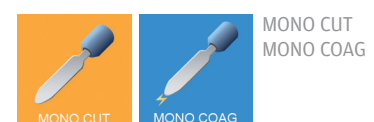
## Indications:

- endoscopic polyps resection
- mucosectomy
- sphincterectomy - biliary pancreatitis
- rectal tumor resection



## Indications:

- residual tissue removal and haemostasis of bleeding areas after polypectomy
- bleeding from angiodysplastic lesions
- stent ingrowth
- bleeding from malignant lesions in the stomach and colon, colitis



## Indications:

- cutting and coagulation of the tissues in open surgery procedures



Polypectomy snares: oval shaped, reusable



E 17-9 large, Ø 40mm

E 17-8 medium, Ø 30mm

E 17-7 small, Ø 25mm

Polypectomy snares: hexagonal shaped, reusable



E 18-9 large, Ø 40mm

E 18-8 medium, Ø 30mm

E 18-7 small, Ø 25mm



R1-100 Loop handle

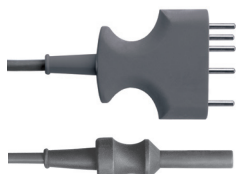


E30-2 - length 25 mm

E30-3 - length 30 mm Papillotomy loop, reusable



R2-50 Papillotomy loop handle



281-035 Endoscopic monopolar cable, SDS plug, length 3 m

Argon flexible probes



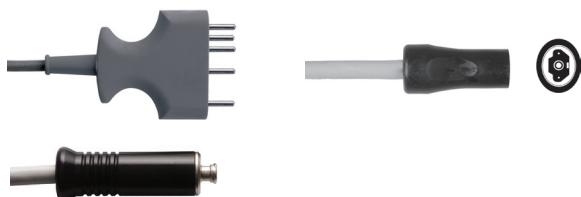
932-148  
Ø 1.5 mm,  
length 1.5m

932-149  
Ø 2.3 mm,  
length 2.2 m

932-150  
Ø 3.2 mm,  
length 2.2 m

932-151  
Ø 1.5 mm,  
length 3 m

932-152  
Ø 2.3 mm,  
length 3 m



432-465 Argon flexible electrode connection, SDS plug, LuerLock, length 3 m. Oval plug

See our catalogue for a comprehensive range of accessories.  
For more information, contact the regional representatives or visit [www.emed.pl](http://www.emed.pl)

EMED SP. Z O. O. SP. K. | ul. Ryżowa 69a | 05-816 Opacz near Warsaw, Poland  
tel: +48 (22) 723 08 00 | fax: +48 (22) 723 00 81 | email: [export@emed.pl](mailto:export@emed.pl) | [www.emed.pl](http://www.emed.pl)

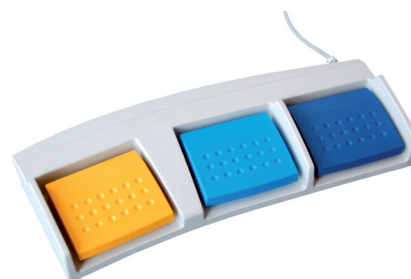
Copyright© EMED. All rights reserved. Any copying, distribution, publishing in whole or in part without written EMED permission is prohibited.



100-600 Electro-surgical system endo



080-060 TinyLine trolley (endo),  
case for 1 argon cylinder (5L / 10L),



100-316 endo Footswitch CUT/COAG/PLASMA

CE  
1011  
ISO 9001  
ISO 13485

May 2012

**emed**  
confidence in performance