

FIRE-XEL

Dynamic 3-Way Mode
Fractional CO₂ Laser + CO₂ Laser + Skin Analyzer

Indications

Fractional Laser

Improves skin tone, glow and texture
Reduces fine lines and wrinkles
Softens deeper frown lines
Tightens loose eyelid skin
Tightens skin around the neck and jowls
Tightens large pores
Reduces stretch marks
Erase scars, especially acne scars
Skin resurfacing

CO₂ Laser

Freckle
Dark spots
Lentigo
Sun damaged skin
Mole / Wart
Condylomas

Specifications

General

Dimensions (W × D × H)	320(W) × 420(D) × 1100(H) mm (Include Arm H : 1840mm)
Weight	38 kg
Weight including accessories	45.3 kg
Main voltage	220~240 VAC, 50~60 Hz
Maximum power, in operation	400 VA
Safety class	Class IV laser
Fuses	2 × Little AC 250V 10A

Laser Module

Laser type	fractional CO ₂ laser, Scanner type
Wavelength	10.57 ~ 10.63 μm, invisible infrared
Beam mode quality	TEM ₀₀ , 95% purity
Beam quality (at 1/e ²)	M ² ≤ 1.2
Laser power output	Up to 30W
Spot size	120 / 300 / 600 μm
Delivery system	7-joint, fixed mirror articulated arm
Aiming beam	3.5mW, 650nm red diode laser
Cooling system	Water

Environmental Condition

Temperature	+10 ~ +40 °C
Relative humidity	30 ~ 75%
Atmospheric pressure	700 ~ 1060 hPa

Clinical system

This system analyzes skin moisture and skin type, it automatically sets laser parameters based on the clinical data

Scanner system

Scanning area	X: 3 ~ 20 mm, Y: 3 ~ 20mm
Scanning shape	Rectangle, Circle, Diamond, Hexagon, Round rectangle
Scanning direction	Sequence, Converge, Diverge, Random, Spray
Dot pitch (Density)	0.5 ~ 1.9 mm
Pulse width	Typically 360 ~ 10,000 μs
Energy in one dot	Typically 5.4 mJ ~ 150 mJ (@15 Watt, 1 time)
Overlap	1 ~ 9 times

Surgical system

Ultra Pulse	
Pulse width	400 ~ 1,250 μs
Exposure time	10 ~ 1,000 ms
Repeat delay	10 ~ 1,000 ms / Single
Power peak	7.0 ~ 20.0 Watt
Super Pulse	
Exposure time	500 ~ 9,000 μs
Repeat delay	10 ~ 1,000 ms / Single
Power	10.0 ~ 30.0 Watt
Continuous Wave	
Power	0.5 ~ 30.0 Watts

A New Species of Fractional CO₂ Laser



Special Features

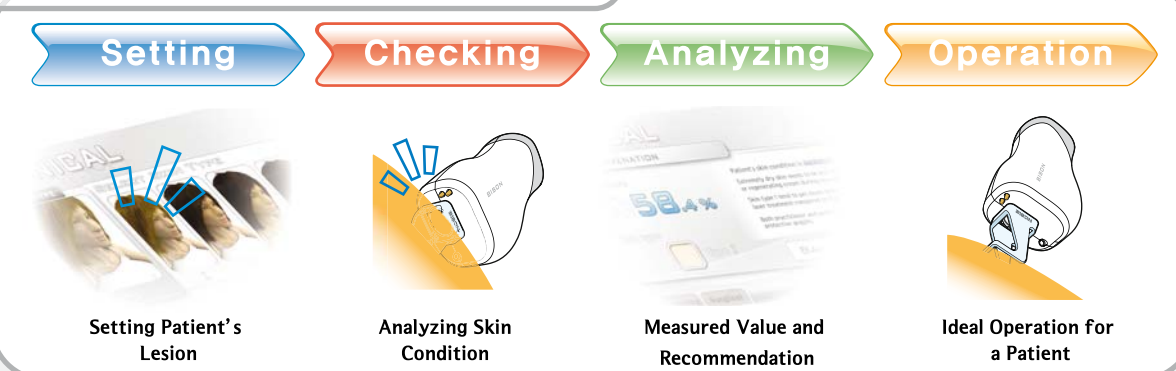
The World's First Skin Type Selection System
A.I. Skin Analyzing System
3 - Way Mode
Premium Quality
Various Selectivity-Over 3,000 Scanning Modes
Human-Friendly Design



Fractional CO2 Laser + CO2 Laser + Skin Analyzer

FIRE-XEL, fractional CO2 laser, equips a self skin analyzing A.I. system at first in the world. Users are able to measure and analyze patient's skin condition and lead the best effects of skin rejuvenation for your patients with this advanced 3rd generation laser device.

Skin Analysis System



A.I. Skin Analyzing System

A.I. skin analyzing system of BISON MEDICAL is a self setting system to select the most effective and safe mode for a patient with its self-analyzing data based on measuring results of the patient's skin and self-stored various basic clinical data. So this system gives a convenience to the practitioners and a satisfactory result to your patients.

3 - Way Mode

FIRE-XEL combines 3 major functions, surgical CO2 laser and skin analysis as well as fractional CO2 laser, for the most precise treatment. There was no such a multi functional laser device before FIRE-XEL in the world.

Premium Quality

Unlike existing other devices, FIRE-XEL mounts a globally recognized high quality Galvano motor for the fast, precise and safe treatment. With this motor, FIRE-XEL solves the frequent motor trouble that is the most troublesome problem of other scanner devices.

Various Selectivity-Over 3,000 Scanning Modes

Practitioners are able to select the most proper shape, size, and density of laser among more than 3,000 modes according to your patient's symptoms and region. And it's very easy to find a proper scanning mode with its simple and convenient touch-screen.

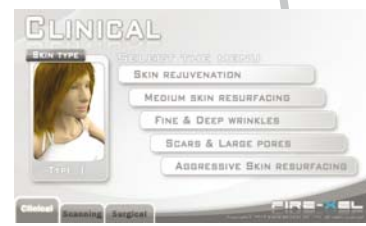
Human-Friendly Design

Unlike other devices, using an Air jet, FIRE-XEL eliminates smoke and provides cooling effect at the process of treatment to minimize the risk of PIH. Practitioners can carry out various operations with its 7-joint Arm. And also a stylish design of BISON MEDICAL is well suited for every space and it will make your hospital more trustworthy.

Multi Mode Fractional CO2 Laser



Scanning Mode
Various selectivity from over 3,000 modes
Practitioners are able to select the most proper area, shape, density and direction of laser among more than 3,000 modes on a display panel easy and quickly.



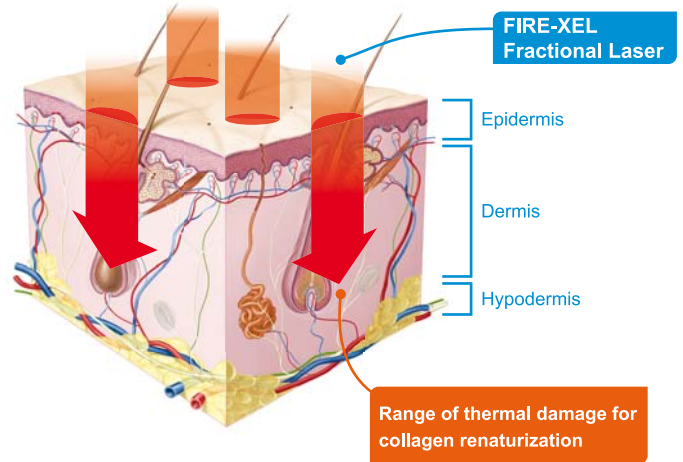
Clinical Mode
From the skin analyzing to the optimal setting
Analyzing the patient's skin conditions and skin type according to the types of treatment, the optimal laser parameters are set automatically.



Surgical Mode
Utilized in a variety of treatment
Practitioners can utilize this Surgical mode for more complicated treatment, and the effects of other modes can be maximized by using this mode together.

FIRE-XEL's core function is an activation of collagen synthesis. Acne scars and wrinkles can be treated by this function as well as skin tightening and vitality. With only an advanced laser device like FIRE-XEL, most of skin problems such as pigmentation, wrinkles, whitening and tightening can be solved in a short period.

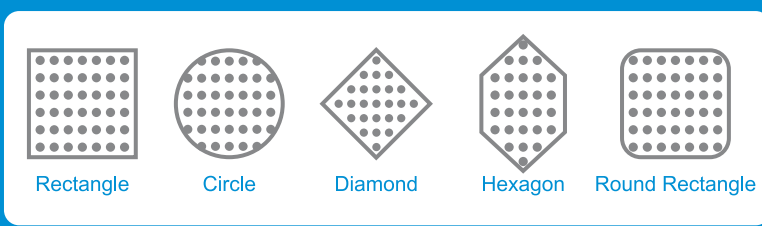
Normally patients undergo 1 to 3 treatments at intervals of 3 to 4 weeks and every treatment is finished within 15 minutes.



Indications

Fractional Laser	CO2 Laser
Improves skin tone, glow and texture	Freckle
Reduces fine lines and wrinkles	Dark spots
Softens deeper frown lines	Lentigo
Tightens loose eyelid skin	Sun damaged skin
Tightens skin around the neck and jowls	Mole / Wart
Tightens large pores	Condylomas
Reduces stretch marks	
Erase scars, especially acne scars	
Skin resurfacing	

Shapes



Directions

