

EXPORT ONLY



# CLATUU $\alpha$

FREEZE ON FAT OFF

# Fast and Easy Applicator Exchange

With a simple press-and-release mechanism, the CLATUU Alpha allows maximum convenience and makes switching cooling cups as simple as possible. Detaching cables or turning the system off is not required even during treatments.



## ARC-T

Thighs & Other Flat and Wide Areas

## WING Max

Upper & Lower Abdomen

## WING

Upper & Lower Abdomen  
Flanks & Other Large Areas

## WING Plus

Bra Line, Back & Love Handles

## FLAT Mini

Double Chin, Axilla, Knees & Other Local Regions

## WING Mini

Double Chin, Axilla, Knees & Other Local Regions

## FLAT

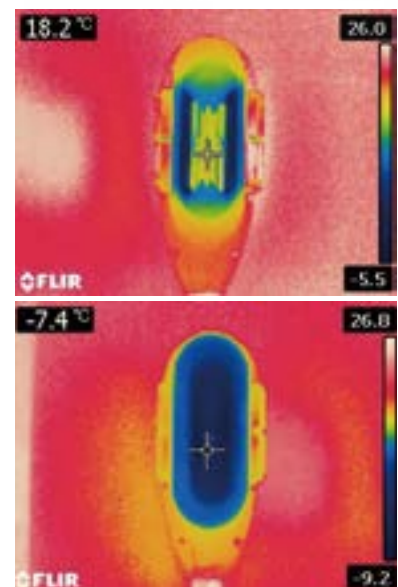
Abomen & Inner Thighs

## Treat 2 Areas Simultaneously in Only 40 Minutes.

The CLATUU Alpha is equipped with an expandable range of applicators that makes it easier than ever to achieve significant results on the most challenging of areas.

## Upgraded Technology for Enhanced Results.

The upgraded 360° surround cooling of the CLATUU Alpha delivers cooling energy throughout the entire applicator and makes it possible to reach the designated treatment temperature at a faster rate, thus increasing efficiency by up to 18%.



360° Surround Cooling Technology



## Adjustable Levels

Not only is the CLATUU Alpha capable of 20% stronger suction, it also provides medical practitioners with the ability to adjust both cooling and suction levels to confidently provide customized treatments for patients.



**Non-invasive fat cryolipolysis using a new 4D handpiece: a comparative study with a porcine model**

S. Y. Jung<sup>1</sup>, T. R. Kwon<sup>2</sup>, J. Song<sup>3</sup>, K. Y. Park<sup>4</sup> and S. J. Kim<sup>5</sup>

<sup>1</sup>Department of Plastic and Reconstructive Surgery, Seoul National University Medical Center, Seoul, Korea; <sup>2</sup>Department of Plastic and Reconstructive Surgery, Seoul National University Medical Center, Seoul, Korea; <sup>3</sup>Department of Plastic and Reconstructive Surgery, Seoul National University Medical Center, Seoul, Korea; <sup>4</sup>Department of Plastic and Reconstructive Surgery, Seoul National University Medical Center, Seoul, Korea; <sup>5</sup>Department of Plastic and Reconstructive Surgery, Seoul National University Medical Center, Seoul, Korea

**OBJECTIVE:** To evaluate the efficacy and safety of a new 4D handpiece for non-invasive fat cryolipolysis compared to a conventional 2D handpiece in a porcine model.

**DESIGN:** A comparative study.

**SETTING:** A porcine model.

**PARTICIPANTS:** 10 pigs were divided into two groups: 4D handpiece group and 2D handpiece group.

**MEASUREMENTS AND MAIN RESULTS:** The 4D handpiece group showed significantly greater fat reduction and less skin damage compared to the 2D handpiece group.

**CONCLUSIONS:** The new 4D handpiece is more effective and safer than the conventional 2D handpiece for non-invasive fat cryolipolysis.

**Key and safety of newly developed configuration**

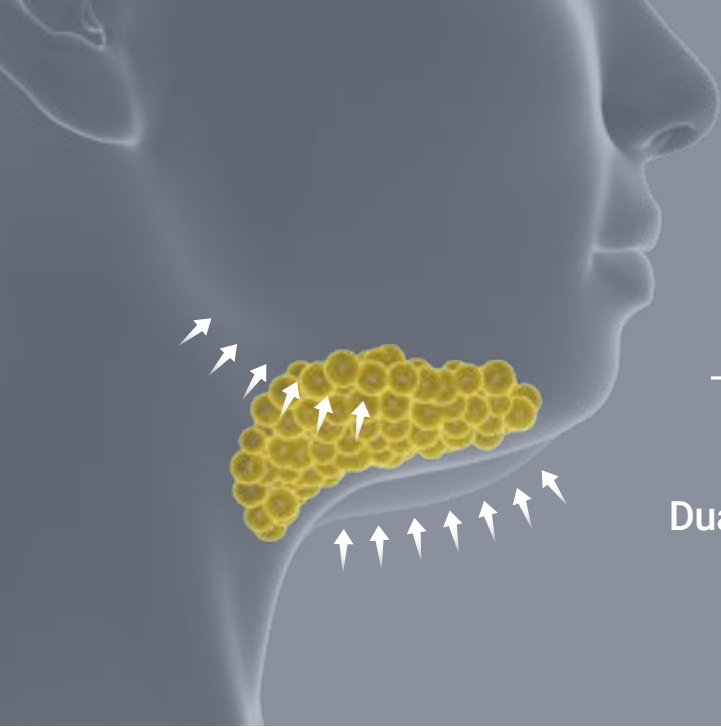
The newly developed configuration of the 4D handpiece is designed to provide a 360-degree cooling panel, which allows for more uniform and effective fat cooling compared to the conventional 2D handpiece. This configuration also ensures the safety of the skin by preventing excessive cooling and damage.

**Key and safety of newly developed configuration**

The newly developed configuration of the 4D handpiece is designed to provide a 360-degree cooling panel, which allows for more uniform and effective fat cooling compared to the conventional 2D handpiece. This configuration also ensures the safety of the skin by preventing excessive cooling and damage.

Our clinical results confirmed that non-invasive fat cooling results in adipocyte cell death and apoptosis over time.

It has the world's first 360° cooling panel that can deliver cooling energy more effectively than the conventional two-sided model.



# Mini for Double Chin

Dual Applicators for Specialized Treatments

## WING Mini



## FLAT Mini



Baseline



Post 7 Weeks / 1 Session



Baseline



Post 5 Weeks / 1 Session



Baseline



Post 4 Weeks / 1 Session

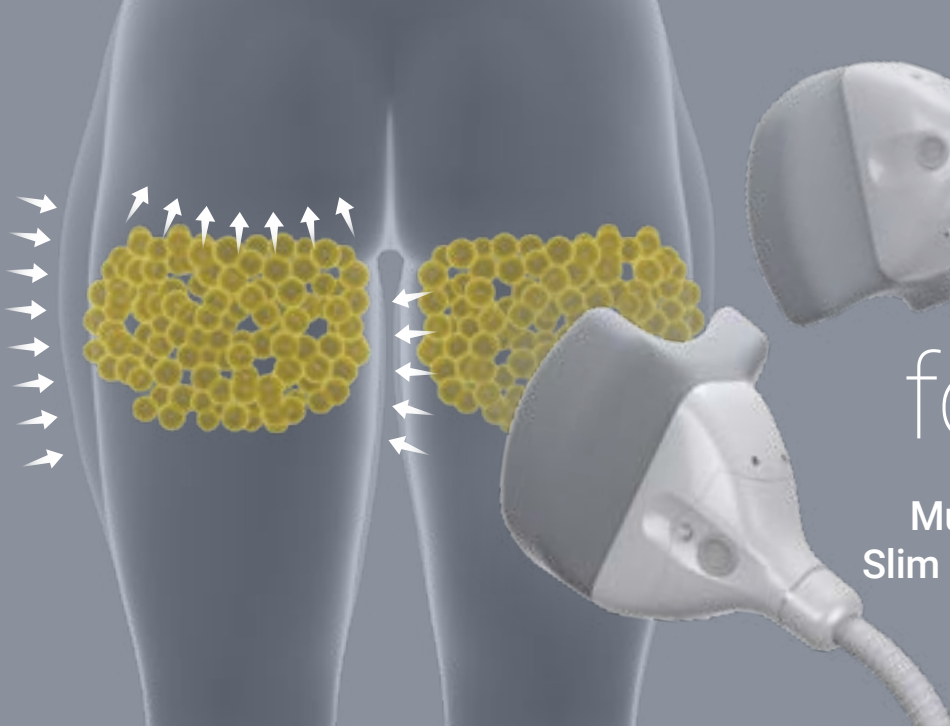


Baseline



Post 4 Weeks / 1 Session





# ARC-T for Thighs

Multi-Angle Attachment for  
Slim & Contoured Legs & Hips

## ARC-T



Front



Back



Outer



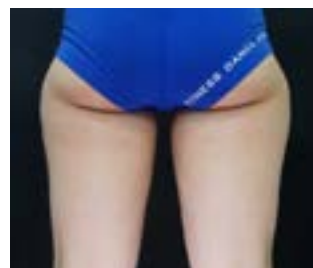
Inner



Baseline



Post 6 Weeks / 1 Session



Baseline



Post 24 Weeks / 1 Session

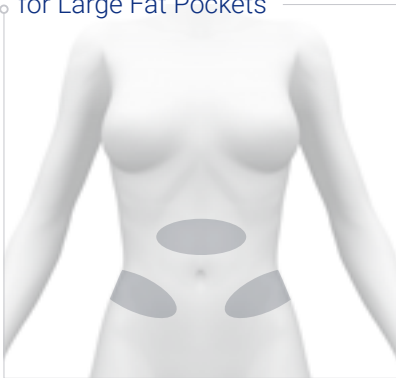
# Proven Results

Customized Solutions for the Most Challenging of Patients' Needs.



## WING

for Large Fat Pockets



Baseline

Post 4 Weeks / 1 Session



Baseline

Post 14 Weeks / 1 Session



## WING Max

for Large Fat Pockets



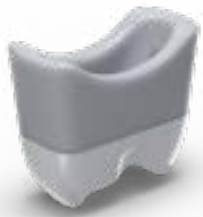
Baseline

Post 13 Weeks / 1 Session



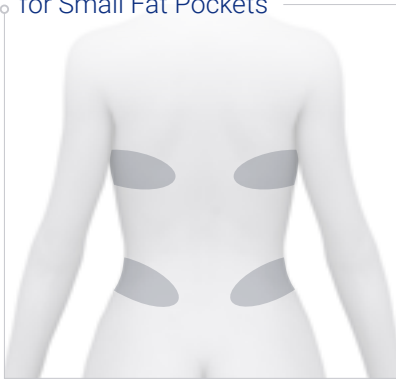
Baseline

Post 9 Weeks / 1 Session



### WING Plus

for Small Fat Pockets



Baseline



Post 6 Weeks / 1 Session



Baseline



Post 9 Weeks / 1 Session



### FLAT

for Small Fat Pockets



Baseline



Post 8 Weeks / 1 Session



Baseline



Post 8 Weeks / 1 Session



EXPORT ONLY

- No Side Effects
- Non-Invasive
- Effective & Safe
- Economical Treatment Costs

# WHAT IS YOUR NEXT **ALPHA?**

CPB04/EN/2019



T +82-2-517-2114 | [classys.com](http://classys.com) | [info@classys.com](mailto:info@classys.com)  
Images and texts are intellectual property of classys. Copying of this material can be subject to charges of both civil and criminal law of legal justice. Copyright to Classys © all rights reserved. Export only.

Get social with us!



Distribution Switzerland:  
LASERMED AG | [lasermed.ch](http://lasermed.ch)