



SmartXide PUNTO  
**For Vulvo Vaginal  
Health**

MonaLisa Touch<sup>®</sup>

Game Changing  
Therapy for Women Intimacy

SmartXide Touch stands out in Gynaecology



**DEKA**  
Innate Ability

# PUNTO

EVOLVING EXCELLENCE

## GENITOURINARY

*Syndrome of Menopause*

## POSTPARTUM

*Hypoestrogenism Symptoms*

## GENITAL

*Functional & Aesthetic Surgery*



# Key Principles

A unique CO<sub>2</sub> laser source with exclusive **PSD technology** to achieve performance levels never attained before in dermatological and gynaecological applications.

**Smartxide PUNTO** allows to perform **MonaLisa Touch** treatment: the best Known procedure to treat vulvo-vaginal conditions in menopausal, breast cancer survivors and hysterectomized women.

## Why Choosing PUNTO:

### **MonaLisa Touch®**

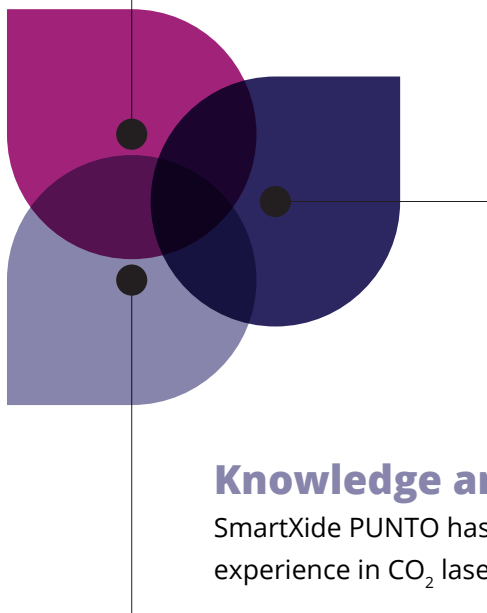
The only scientifically-validated laser procedure for women's intimate health. 80+ international peer-reviewed publications and clinical trials have confirmed the great efficacy and safety of the MonaLisa Touch procedure.

### **Unmatched Versatility**

The four available pulse modes and the exclusive PSD technology allow professionals to choose the right pulse for any treatment area. A special pulse shape - D pulse - has been specifically developed to treat the vaginal mucosa effectively and safety.

### **Knowledge and Expertise**

SmartXide PUNTO has resulted from decades of pioneering experience in CO<sub>2</sub> lasers.





**MonaLisa Touch**<sup>®</sup>

**Dyspareunia**

**Itching and Burning**

**Vaginal Dryness**

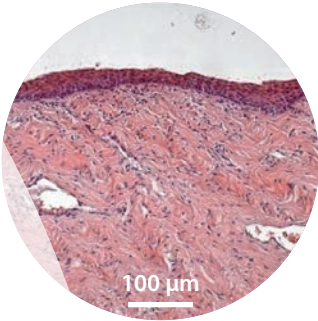
## **MonaLisa Touch**<sup>®</sup>

### **The First and Unmatched Treatment for Genitourinary Syndrome of Menopause**

**MonaLisa Touch**<sup>®</sup> acts on atrophic vaginal tissue to restore the functionality of vaginal mucosa. Non-invasive and safe, MonaLisa's therapy is proven to be highly effective and well tolerated. The CO<sub>2</sub> laser delivers controlled energy through a full-angle probe inserted into the vaginal canal. The D pulse targets both surface and deep tissue,

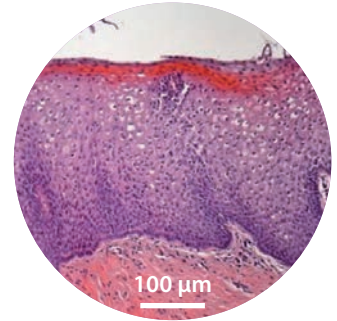
increasing microcirculation, revitalizing the elasticity of the vaginal mucosa, and improving the hydration and sensitivity of the vulvo-vaginal area. As a result, MonaLisa solves the most common issues that affect women's quality of life and intimate relationship, such as vaginal dryness, itching and burning, dyspareunia.

# Clinical Results

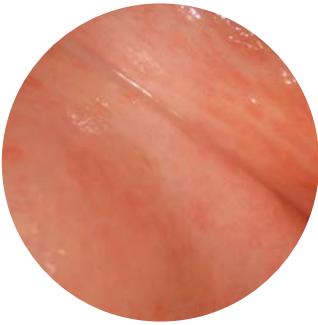


PRE

MonaLisa Touch treatment.  
The morphology demonstrates the  
restored metabolic trophism and  
dynamics of the whole epithelium.  
Courtesy of **Prof. A. Calligaro**,  
University of Pavia, Italy.

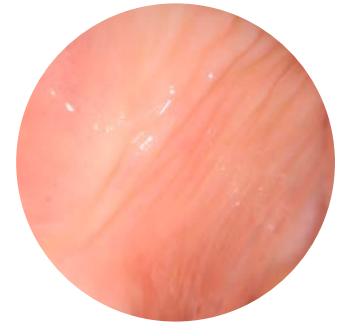


POST

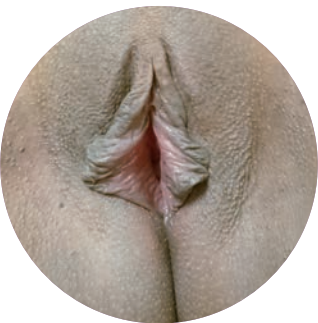


PRE

MonaLisa Touch treatment.  
Colposcopic images of vaginal mucosa.  
Courtesy of **MG. Fallani, M.D., A. Pieralli, M.D.,  
Prof. S. Guaschino, M.D., Prof. C. Penna, M.D.**  
Careggi University Hospital, Florence, Italy.

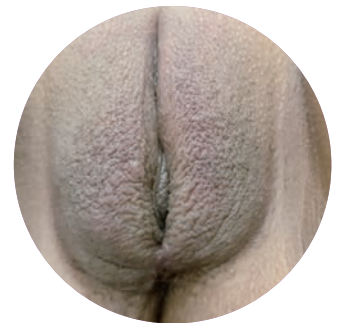


POST



PRE

Vulvo-Vaginal Aesthetic and Functional Surgery.  
CO<sub>2</sub> laser labiaplasty combined with fat grafting.  
Courtesy of **P. González Isaza, M.D.**  
Pereira, Colombia.



POST

THE SCIENCE BEHIND

**μ-SCAN V<sup>2</sup>LR**

## Speed and Repeatability of the Treatment

Exclusive **Hi-Scan V<sup>2</sup>LR Probe** - the full-angle applicator emitting laser energy in a **360°** manner ensures quick and perfect treatments, which are easily duplicated over different sessions and with different patients.



MADE IN ITALY

DEKA systems and devices are all designed and assembled in Italy. To achieve our sustainability goals and make our supply chain traceable, transparent and reliable, we set international environmental standards for ourselves and our suppliers.

MADE SUSTAINABLY

## Perfect Laser Tissue Interaction

D-Pulse is an exclusive pulse shape, designed by DEKA specifically for the MonaLisa Touch treatment, thus ensuring maximum effectiveness (by using the right penetration depth) without any side effects (thermal effect control).



## Quick and Painless Treatment

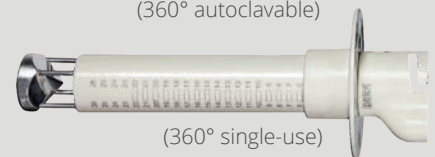
The laser energy to the vaginal walls is provided in a fractional mode (DOT-Therapy): only a small percentage of vaginal tissue is directly affected by the laser.

## Maximum Patient Adaptability

Availability of different types of probes to address the specific clinical and/or anatomic needs of individual patients.



(360° autoclavable)



(360° single-use)



(23 mm diameter)



(16 mm diameter)



(vulvar applicator)



# Redefining Effectiveness

## **INTERNATIONAL ADVISORY BOARD**

In 2020, DEKA established an international Medical Advisory Board for Female Intimate Health, which includes recognized professors and experts from all continents. The board is committed to developing new protocols and clinical guidance and advancing laser techniques and methods.

## **PEER-REVIEWED SCIENTIFIC PUBLICATIONS**

75+ international peer-reviewed publications in have confirmed the great efficacy and safety of the MonaLisa Touch treatment.

## **PROVEN RESULTS**

MonaLisa Touch® is the only procedure proven by thousands of successful treatments worldwide.





# The Floor to Practitioners

“ We started testing MonaLisa Touch® and treating patients in 2012. At the beginning, I was very skeptical about the use of lasers for vaginal stimulation because, at that time, no evidence which could offer credibility was available in Gynecology. With time both clinical and histological results exceeded my expectations! Histological studies, conducted in collaboration with Prof. Alberto Calligaro from the University of Pavia, showed that MonaLisa Touch® treatment restored the mucosa to a pre-menopausal condition, as would occur after an oestrogen hormone replacement treatment.”

**Stefano Salvatore, M.D.**

Associate Professor in Obstetrics and Gynecology, Vita e Salute San Raffaele University  
Head of the Urogynaecology Unit at the IRCCS San Raffaele Hospital, Milan (Italy)

“ A game changer is literally something that alters the way we do things, and we don't have a lot of game changers available every day in medicine. I like to use the word game changer with MonaLisa Touch® because it is fulfilling a huge void for women. I was very willing to try this because there is a huge demand. This is a broad therapeutic area. Results are almost immediate.”

**Mickey Karram, M.D.**

Director of Fellowship Program on Female Pelvic Medicine & Reconstructive Surgery  
The Christ Hospital, Cincinnati, OH (USA)

“ I consider MonaLisa Touch® treatment a milestone option for several urogynecological applications, such as Genitourinary Syndrome of Menopause (GSM), cancer related vaginal atrophy and dyspareunia conditions that do not respond quite well to traditional treatments. All of our patients reported an important improvement either on all the symptoms and quality of life.”

**Pablo Gonzalez Isaza, M.D.**

Specialist in Obstetrics and Gynecology, San Jorge University Hospital, Pereira (Colombia)  
President of Colombian Aesthetics Gynecologists Association

THE PERFECT MATCH

## PUNTO Strength

Operator and patient total comfort benefits:

- The only **validated in-depth laser therapy** for women intimacy
- A device designed to regenerate the vulvo-vaginal mucosa
- A history of **hundreds of thousands of successful treatments** worldwide
- **Maximum safety** and comfort
- Outstanding results with no recovery time
- The most advanced tool to treat genitourinary symptoms



**Only for DEKA Users:**

a great support in medical practice

**DEKA** Club

**7 mirrors**  
articulated arm

**High precision**  
scanner

**360° V<sup>2</sup>LR**  
probe

**Software**  
GUI

**Integrated protocols**  
specifically designed  
for Gynaecology



# Technical Specifications

SMARTXIDE PUNTO	
<b>Laser Type</b>	CO <sub>2</sub> RF- PSD – 10,600 nm
<b>Power</b>	0.5-30 W   0.5-50 W
<b>Dimensions and Weight</b>	122 (H) cm x 42 (W) cm x 54 (D) cm   62 Kg
<b>Electrical Requirements</b>	100-230 Vac – 50/60 Hz – 1200VA
HI-SCAN V <sup>2</sup> LR SCANNER SYSTEM	
<b>Scanner Area</b>	8X8mm (shape: square) and 13X13mm (shape: square frame)
<b>Scanning Methods</b>	Normal - Interlaced - SmartTrack
<b>SmartStack Level</b>	From 1 to 5
<b>Probes</b>	360° full-angle both autoclavable and single - use (optional) 90° single - angle (optional) Straight vulvar probe

**DANGER** - Visible and invisible laser radiation. Avoid eye or skin exposure to direct or scattered radiation. Class 4 laser product.

This brochure is not intended for the market of USA.



Follow us on



[www.dekalaser.com](http://www.dekalaser.com)

Dealer stamp

Distribution Switzerland:



[www.lasermed.ch](http://www.lasermed.ch)



**DEKA M.E.L.A. s.r.l.**

Via Baldanzese,17 - 50041 Calenzano (FI) - Italy  
Tel. +39 055 8874942 - Fax +39 055 8832884

#### DEKA Innate Ability

A spin-off of the El.En. Group, DEKA is a world-class leader in the design and manufacture of lasers and light sources for applications in the medical field. DEKA markets its devices in more than 80 countries throughout an extensive network of international distributors as well as direct offices in Italy, France, Japan and USA. Excellence is the hallmark of DEKA's experience and recognition garnered in the sphere of R&D in over thirty years of activity. Quality, innovation and technological excellence place DEKA and its products in a unique and distinguished position in the global arena. DEKA manufactures laser devices in compliance with the specifications of Directive 93/42/EEC and its quality assurance system is in accordance with the ISO 9001 and ISO 13485 standards.